

PRODUCT INFORMATION PACKET

marathon[®]
Motors

Model No: 326TSTDR14034
Catalog No: U521
60,1800,DP,326TS,3/60/200/400YD
Fire Pump



Regal and Marathon are trademarks of Regal Beloit Corporation or one of its affiliated companies.
©2018 Regal Beloit Corporation, All Rights Reserved. MC017097E

REGAL[®]

Product Information Packet: Model No: 326TSTDR14034, Catalog No:U521 60,1800,DP,326TS,3/60/200/400YD

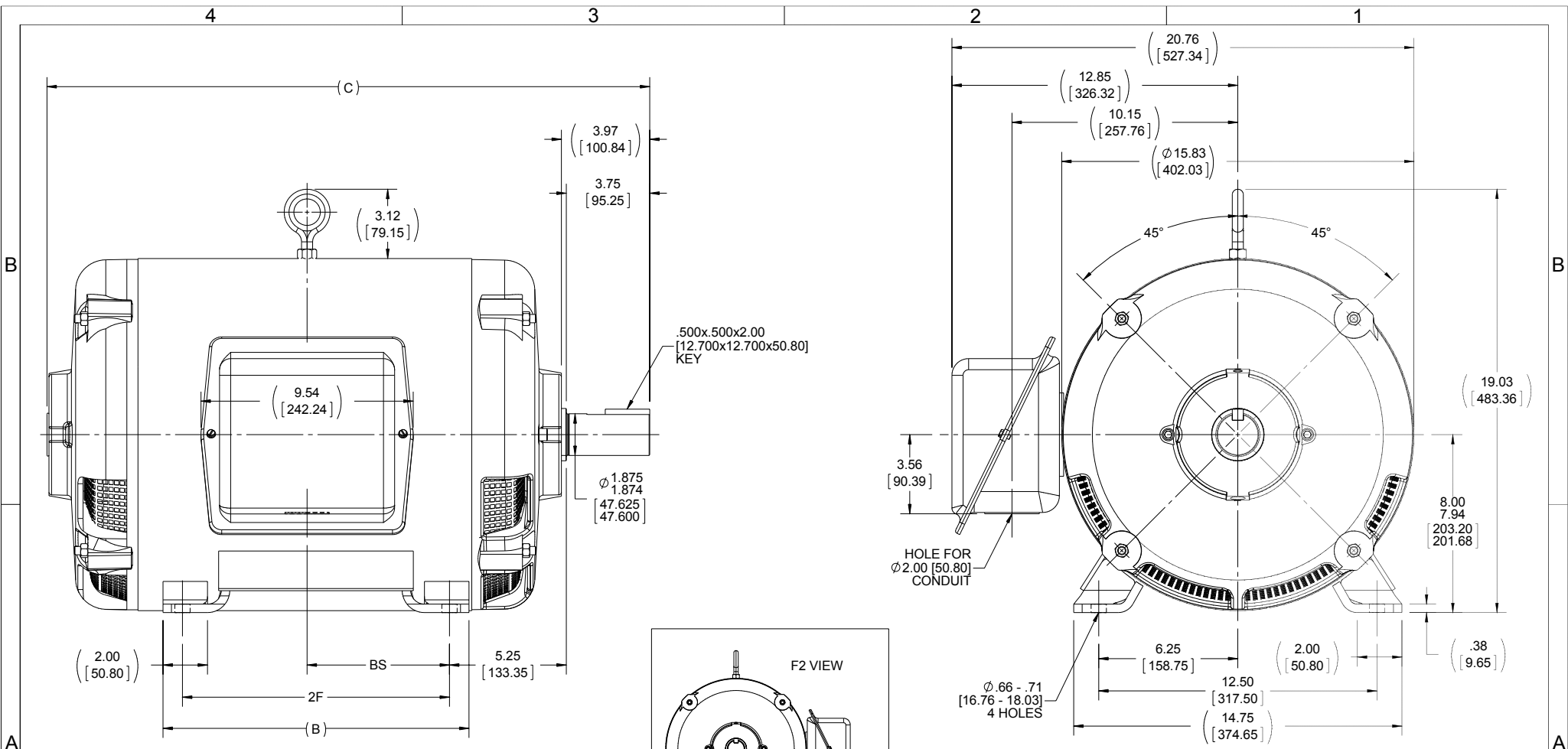
Nameplate Specifications

Output HP	60 Hp	Output KW	45 kW
Frequency	60 Hz	Voltage	200/400 V
Current	167/83.5 A	Speed	1770 rpm
Service Factor	1.15	Phase	3
Efficiency	93.6 %	Duty	CONTINUOUS
Insulation Class	F	Design Code	B
KVA Code	E	Frame	326TS
Enclosure	DP	Overload Protector	NOT
Ambient Temperature	50 °C	Drive End Bearing Size	6312
Opp Drive End Bearing Size	6311	UL	No
CSA	Y	CE	Y
IP Code	22		

Technical Specifications

Electrical Type	SQ CAGE IND RUN	Starting Method	WYE START DELTA RUN
Poles	4	Rotation	REV
Mounting	RIGID	Motor Orientation	HORIZONTAL
Drive End Bearing	BALL	Opp Drive End Bearing	BALL
Frame Material	ROLLED STEEL	Shaft Type	TS
Overall Length	29.5 in	Frame Length	17.5 in
Shaft Diameter	1.88 in	Shaft Extension	3.75 in
Assembly/Box Mounting	F1/F2 CAPABLE		
Outline Drawing	B-SS28288-1750	Connection Diagram	A-EE7308K

This is an uncontrolled document once printed or downloaded and is subject to change without notice. Date Created: 10/08/2018



- NOTES:
 1. CONDUIT BOX CAN BE ROTATED IN 90° STEPS.
 2. CONDUIT BOX CAN BE MOUNTED ON OPPOSITE SIDE BY REMOVING BRACKETS AND TURNING FRAME 180°.
 3. NAMEPLATE READ FROM CONDUIT BOX SIDE OF MOTOR.

DASH 1750 HAS A SPECIAL CONDUIT BOX LOCATION

1250	324TS	24.59 [624.59]	12.25 [311.15]	10.50 [266.70]	5.25 [133.35]	F1 OR F2
1400	326TS	26.09 [662.69]	13.75 [349.25]	12.00 [304.80]	6.00 [152.40]	F1 OR F2
1400	324TS	26.09 [662.69]	12.25 [311.15]	10.50 [266.70]	6.00 [152.40]	F1 ONLY
1450	324TS	26.59 [675.39]	12.25 [311.15]	10.50 [266.70]	6.25 [158.75]	F1 ONLY
1500	326TS	27.09 [688.09]	13.75 [349.25]	12.00 [304.80]	6.40 [162.56]	F1 ONLY
1750	326TS	29.59 [751.59]	13.75 [349.25]	12.00 [304.80]	9.10 [231.14]	F1 ONLY
DASH	FRAME	C	B	2F	BS	MTG.

DRAWING REVISION H	REVISION BY MSG	DATE 11-16-2015
ECO ECO-0088777	APPROVED BY TVUE	DATE 11-17-2015
ECO DESCRIPTION UPDATE TO CURRENT STANDARDS		
<small>COPYRIGHT REGAL BELOIT AMERICA, INC. ALL RIGHTS RESERVED. PROPRIETARY AND CONFIDENTIAL INFORMATION - THIS DOCUMENT IS THE PROPERTY OF REGAL BELOIT AMERICA, INC. (OWNER) AND CONTAINS OWNER'S PROPRIETARY INFORMATION. ANY PERSON, CORPORATION OR OTHER FIRM RECEIVING IT IS DEEMED, BY RECEIVING IT, TO AGREE THAT IT, AND/OR ANY PART OF IT, SHALL NOT BE DISCLOSED TO ANY PERSON, CORPORATION OR OTHER ENTITY, DUPLICATED, AND/OR USED, EXCEPT AS EXPRESSLY APPROVED IN WRITING IN ADVANCE BY OWNER. THIS DOCUMENT SHALL BE RETURNED TO OWNER UPON REQUEST. IT MAY BE SUBJECT TO CERTAIN RESTRICTIONS UNDER APPLICABLE EXPORT CONTROL LAWS AND REGULATIONS.</small>		

TOLERANCES UNLESS OTHERWISE SPECIFIED:			
DEC.	INCH	mm	ANGLE
.X	+0.1	[+2.5]	±7-30°
.XX	+0.03	[+0.76]	
.XXX	+0.005	[+0.127]	
.XXXX	+0.0005	[+0.0127]	
REMOVE BURRS & BREAK SHARP EDGES: .003/.015 [0.076/.381] X 45° CORNER FILLETS: R.02 [51]			
MACHINED SURFACES: 200 5.1			
mm SHOWN IN [BRACKETS]			

DRAWN BY TJB	DATE 11-19-1999
APPROVED BY ML	DATE 11-19-1999
REFERENCE	THIRD ANGLE PROJECTION

REGAL™ Regal Beloit America, Inc.

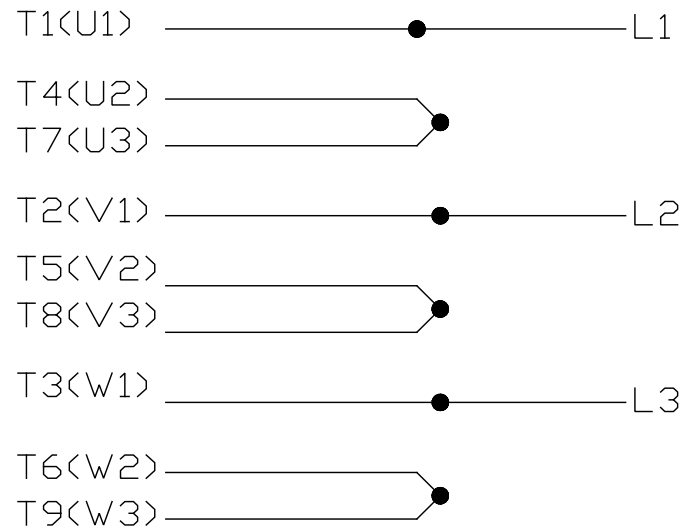
OUTLINE
320TS FR. - DR. PR. BB - TS

MATERIAL	PROCESS/FINISH
SIZE B	DRAWING NUMBER SS28288
SHEET 1 OF 1	


LOW VOLTAGE



HIGH VOLTAGE



VIEW OF TERMINAL END

				TOLERANCES UNLESS SPECIFIED		 REGAL - BELOIT CORPORATION	DRAWN PGK 06-04-1997						
NO.	REVISION	BY & DATE	CHK	ANG	±		UNIT	CHK	ML 06-05-1997				
E	CORRECTED IEC MARKINGS ECD-0111208	WGJ 01-23-2017	EMH	DEC.		INCHES							
D	RE-DRAWN WITH REGAL LOGO ECD-0110493	WGJ 09-30-2016	EMH	.X	±.1			APPD GK 06-15-1997					
8	ADDED IEC DESIGNATIONS MU95020	TJW 4/30/2010	MJS	.XX	±.02		TITLE	SCALE					
7	REVISED HIGH VOLTAGE L2 WAS L3 CN52600-354	MRB 09-21-1998		.XXX	±.005		CONNECTION DIAGRAM	REF					
6	REDRAWN ON CADD	PGK 06-05-1997		.XXXX	±.0005		DELTA CON. - 3Ø - 9 LEADS	FMF					
							MAT'L.	PREV					
							FINISH						
THIS DRAWING IN DESIGN AND DETAIL IS OUR PROPERTY AND MUST NOT BE USED EXCEPT IN CONNECTION WITH OUR WORK ALL RIGHTS OF DESIGN AND INVENTION ARE RESERVED THIS IS AN ELECTRONICALLY GENERATED DOCUMENT - DO NOT SCALE THIS PRINT							RFP	CAD FILE EE7308K	SIZE	DRAWING NO.	PAGE	OF	REV.
							DIST		A	EE7308K			E